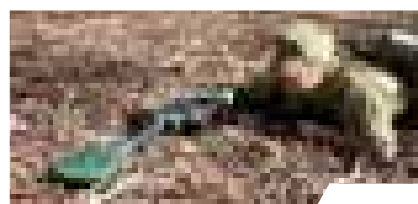
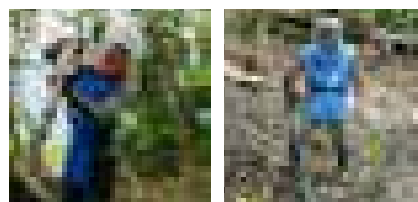


F3 COMPACT Mine Detector

The F3 COMPACT incorporates all of the capabilities of the proven standard F3 detector but uses a new mechanical platform that greatly reduces the packed volume and weight of the equipment.



Effective

Capable of detecting all metal and minimum metal mines at full sensitivity regardless of the mineralised content of soil.

Rugged

Constructed from impact resistant materials and designed to survive in any operating environment.

Easy to Use

Well positioned and intuitive controls.

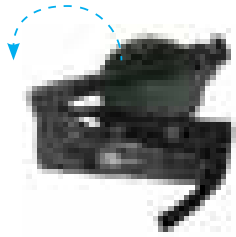
Safe

Uniform sensitivity across the surface of the search head eliminating any blind spots – provision of a 'Confidence Tone' during operation and comprehensive Built-In-Test systems to monitor and confirm detector functionality.

Compact

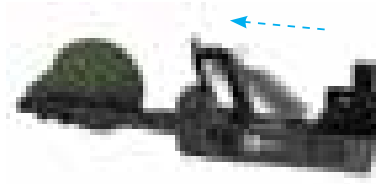
A compact mine detector with full performance.

3 Steps to Deploy Detector



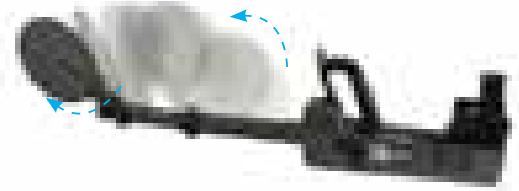
Step 1

Release arm strap and pivot shaft



Step 2

Lock handle and shaft into place



Step 3

Rotate search head and extend shafts

Features

- Variable sensitivity through the selection of seven uniquely combined audio and sensitivity configurations
- Customised sensitivity using Minelab's configuration software
- Minimises risk of initiating magnetic influence mines
- Fully adjustable for operator comfort
- Fully enclosed and protected cables
- Fast and accurate pinpointing
- Audio and visual indications
- RS232 port for data logging
- Adjustable search head
- Simple to operate
- Waterproof (IP68)
- Optional hard case also available



Specifications



Operating Length	1490mm / 59in - 750mm / 30in
Packed Length	397mm / 16in
Operating Weight	2.7kg / 6lbs
Transmission	Multi Period Sensing – BiPolar
Audio Output	Internal Speaker Earset (Options: 1. Speaker ON / 2. Speaker OFF)
Water Resistant	IP68 (Waterproof to 3m)
Batteries	4 x C Cell (Alkaline or Rechargeable)
Data Output	RS232
Visual Display	Nine LED
Battery Alarm	Visual and Audio
Operating Temperature	-30C to 60C / -22F to 140F
Design Standard	MIL STD 810 G

As a world leader in metal sensing technology, Minelab strives to continually improve its product range. Minelab reserves the right to introduce changes to the design, technical features and accessories of this product.

4907-0503-2 Brochure CM 2P A4 F3 Compact EN

COUNTERMINE

AUSTRALIA (Head Office)
USA
IRELAND

Tel: +61 8 8238 0888
Tel: +1 888 949 6522
Tel: +353 21 423 2352
Email: countermine@minelab.com.au

Fax: +61 8 8238 0890
Fax: +1 630 401 8180
Fax: +353 21 423 2353
www.minelab.com

